



A Mission *of Hope*

2 0 0 6 A N N U A L R E P O R T



Since 1968

Columbus Community Center
Community Foundation for the Disabled

Serving people with disabilities since 1968

If your family hasn't been impacted directly by a severe disability, you probably have a friend or neighbor whose family has.

Inside This Report:

- 1 Management Message
- 2 2006 Highlights
- 4 Columbus Programs and Services
- 6 Columbus Business Services
- 8 Financial Summary
- 9 Board Members and Key Personnel

COLUMBUS AT A GLANCE:

- 2 About Columbus
- 4 Columbus Statistics and Demographics
- 6 A History of Commitment to Social Enterprise
- 7 Columbus Business Services: By the Numbers
- 8 Columbus: A Mission of Hope

At Columbus Community Center, we know that people with disabilities have the motivation and ability to work and live with some level of independence. We are proud of a tradition and staff that enable individuals and their families to overcome the obstacles that people with disabilities face in their daily lives.

We all win when we support people in their efforts to work and contribute to the community where they live.

A MISSION OF HOPE

Steven still comes to the center over 30 years after his mother, **Arlene Dial**, helped start the Columbus Community Center in 1968.



"It really does something for an individual to be able to make his own way in life."

Arlene Dial, Steven's mother

Hop

Management Message

A Mission of Hope

It is with great pride that we submit the Columbus Community Center annual report to the community. In this report, you will find a summary of our accomplishments for 2006.

We remain committed to operating as a social enterprise—where social and business missions are integrated so that we truly serve all the stakeholders in our community. And our stakeholders are many. They include individuals with disabilities and their families, social service agencies, local businesses, donors, staff, and the community at large. Together we are able to provide hope for people with disabilities where perhaps there would be none.

The Community Foundation for the Disabled Board of Trustees and Columbus Community Center continue to work together to evaluate how best to deliver programs and services for the individuals and families we serve. In the past three years, our strategic focus has been on expanding business partnerships in the community. Columbus Secure Shredding began operating five years ago, and our customer base continues to grow. With the opening of our Columbus Production Services facility two years ago, we have been able to establish a warehouse training program and expand our production services to local businesses.

This year, our strategic goal to build business partnerships culminated in our “Dignity through Work” recognition event (see page 7 for more). At this event, we were able to say “thank you” to business partners, some of whom have worked with us for decades to provide training and employment for many, many people with severe disabilities.

When we work together with our stakeholders to provide opportunity for people with disabilities, it is a “win-win” for our entire community. We encourage you to come and tour our facility and see first-hand the enthusiasm of the people who serve and are served here.

Sincerely,



Dean Hoffman

Administrator

Columbus Community Center

Sincerely,



Jon VanderStek

President, Board of Trustees

Community Foundation for the Disabled



Dean Hoffman



Jon VanderStek

2006 Highlights

A Year of Hope, Independence, and Success

ABOUT COLUMBUS

Columbus Community Center serves people with disabilities by providing residential services, day activity programs, and training and employment services. The center serves people from sixteen to retirement age.

History

The Community Foundation for the Disabled (CFD) was founded in 1968 by a group of parents who wanted more and better choices for their disabled children. These parents leased space in the old Columbus School for a dollar a year from the Salt Lake City School District. In 1972, Columbus Community Center came into being when the CFD and the Salt Lake City School District agreed to jointly operate the center. Columbus has continued to grow and has served thousands of individuals and their families throughout the years.

Vision

Columbus Community Center believes that every individual with disabilities has the right to develop to his or her full potential. Staff at the center support each person in recognizing and achieving his or her aspirations and goals.

Columbus Community Center serves many stakeholders in the community. It is through the efforts of our staff, families, businesses, donors, state and Federal agencies, and the community at large that we were able to serve 444 people during FY 2005-06. Here are some of the highlights of 2006 that illustrate how our community comes together to provide hope and independence for the people we serve.

- **JUNE** Community Foundation for the Disabled sponsored a golf tournament for friends and supporters of Columbus. This year, 150 people participated, raising \$20,000 for Columbus.
- **AUGUST** Our Board of Trustees worked with local financial institutions, foundations, and individuals to raise \$80,000 to cover the cost of installing a handicapped-accessible elevator in the Columbus Production Services warehouse. GE Money Bank provided a \$35,000 challenge grant, and the Gulton Foundation, UBS Bank USA, Morgan Stanley Bank, GMAC Automotive Bank, Lehman Brothers Commercial Bank, Zions Bank, Wright Express Financial Services, and Foxley & Pignanelli law firm matched the grant with their generous donations. Columbus recognized these donors at the yearly meeting of the Utah Association of Financial Services.
- **SEPTEMBER** Columbus Secure Shredding (CSS) hosted a training session for nonprofits from around the country that are in the process of starting up and operating secure document shredding business units that will employ people with severe disabilities. CSS has been designated as a national training site by NISH (formerly National Industries for the Severely Handicapped).

A MISSION OF HOPE

Dennis has been a production supervisor at Columbus for 14 years. He makes sure that Columbus delivers a quality product to local businesses while reinforcing work skills with the people he supervises.



"Every day brings a new and rewarding challenge."

Com

- **OCTOBER** Columbus held its inaugural “Dignity through Work” recognition event. Local businesses and individuals were recognized for the contributions they have made to support the independence of people with disabilities. FOX 13 filmed a feature story about Columbus Community Center and the inaugural “Dignity through Work” event, featuring a number of Columbus staff and participants.

Five Columbus participants were recognized as finalists for “Columbus Worker of the Year” at the event. This award highlighted the multi-faceted work skills that Columbus participants bring to our business partners and enabled the finalists to share their accomplishments with the many families and friends who attended. Joyce Johnson, Robert Cunningham, Lorie Schiffman, Wendy Sugden, and Rick Wilkey were finalists; Joyce received the award (see page 7 for more details about the event). Adding up the years that they have worked at Columbus (ranging from three years to thirty-one years), these individuals bring a total of more than eighty years of work experience to the table.

- **NOVEMBER** Columbus Secure Shredding officially changed its name from National Data Guard to better reflect its mission to provide secure document destruction while employing people with disabilities. The new website is www.columbussecureshredding.com.
- **DECEMBER** Columbus held its Annual Christmas Party. Two-hundred-and-fifty Columbus staff, participants, family members, and friends attended this year’s party. Santa made an appearance, and gifts were plentiful. For the fifth year, Kelly Bertosh donated his time as Santa, making sure he visited with everyone. The Christmas Party is an event that family, Columbus participants, and staff look forward to each year.

A MISSION OF HOPE

Renee has been with Columbus for 17 years. As a member of the Community Foundation for the Disabled Board of Trustees, she represents Columbus participants.



“As a board member, I can share the Columbus experience at meetings.”

Mission

The Columbus Community Center supports the growth, development, and independence of persons with disabilities.

Values and Beliefs

- Recognize and respect the uniqueness of each individual
- Promote feelings of human dignity and self worth
- Celebrate each individual’s achievement and the achievements of the community as a whole
- Provide opportunities for individuals and their families to make informed choices

Columbus Community Center is jointly operated by Salt Lake City School District and Community Foundation for the Disabled, Inc. Columbus residential and employment services are accredited by the Commission on Accreditation of Rehabilitation Facilities (CARF). www.carf.org



CARF is an internationally recognized accreditation, and Columbus has consistently received 3-year certifications since 1976. The center received its most current certification in May 2005.

community

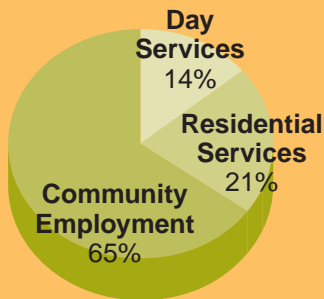
Columbus Programs and Services

Opportunities for Independence

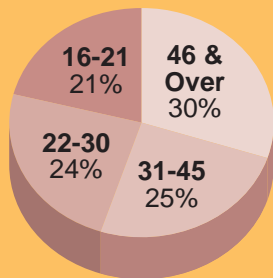
COLUMBUS STATISTICS AND DEMOGRAPHICS

In 2005-2006, Columbus provided services to 444 people through three program areas. Charts on these two pages show service area statistics and demographics of people served.

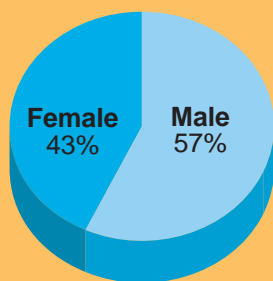
Participants by Program



Age of Participants



Gender of Participants



In our community, there is a staggering need for services to help people with disabilities. These are people who face many obstacles in their daily lives—they have a harder time accessing jobs, health care, transportation, education, and the daily social activities we take for granted.

Since 1968, Columbus Community Center has provided help—and hope—for individuals with disabilities and their families. Columbus is the largest service provider in Salt Lake County that addresses the full spectrum of needs for people with disabilities—including residential services, training and employment programs, and day activity programs.

The charts on these two pages provide a snapshot of our services, but they don't show the stories of the individuals we serve. The success stories we share in this report are only possible with the collaborative efforts of many people—not only individuals with disabilities and their families, but the efforts of Columbus staff, social service agencies, local businesses, donors, and the community at large.

■ Residential Services Program

Residential services are a major issue for families transitioning loved ones from home to more independent living situations. Columbus provides three levels of support: residential homes with round-the-clock care; supervised apartments where staff provide supervision and life-skill training; and the Supported Living Program for people who live independently and need minimal support.

A MISSION OF HOPE

Cody is 20 years old and has been with Columbus for two years. He has learned a variety of work skills in the Columbus Secure Shredding facility. With help from Columbus staff, he is living in an apartment and learning to live independently.



“It’s cool working here [in the shred room]. I have fun. I like the people I work with.”

Indepe

■ Community Employment Program

Through this program, individuals are able to learn social and work skills that allow them to work and receive wages. Based on a “social enterprise model,” Columbus Community Employment Program balances the center’s social mission with solid business goals. Services include training programs; supported job-based training; supported employment; job placement; job coaching; and supervised employment at various business locations.

A MISSION OF HOPE

Kevilynn came to Columbus 28 years ago. She was living in a group home and had no vocational skills. She has since married Anthony whom she met while training at a local hospital laundry; they live in their own apartment.



“Columbus staff gets me to work on time and back home, so I feel safe going to work every day.”

■ Day Activity Program

This program is designed for individuals who cannot work due to severe and multiple disabilities, and it provides respite care for families. This program ensures that individuals are involved in community and leisure activities, with trained staff providing the personal care and equipment needed to enable individuals to participate in activities.

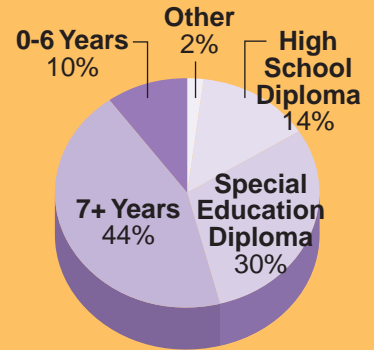
A MISSION OF HOPE

Marci is 55 years old, and she came to Columbus in 1984. She began here in a work program, but when she retired, she started attending the Day Activity Program where she enjoys meeting new people.

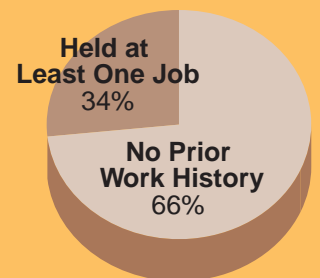


“I enjoy the Activity Program because I enjoy being around a lot of people.”

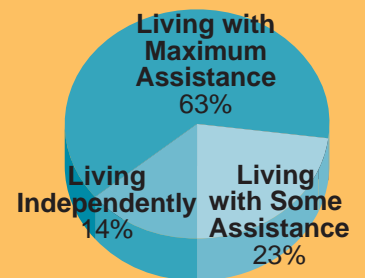
Education Level of Participants



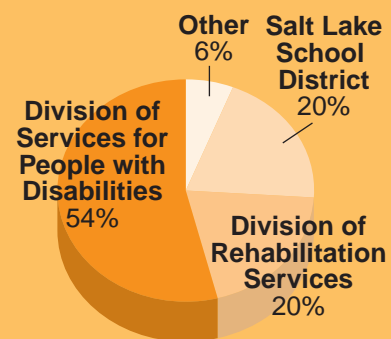
Work History of Participants



Living Situation of Participants



Sources of Funding



ndence

Columbus Business Services

A Better Bottom Line. A Stronger Community.

A HISTORY OF COMMITMENT TO SOCIAL ENTERPRISE

In 1973, Columbus began efforts to find training and work opportunities for the people with disabilities who were attending the center. That year Columbus staff sent out 540 letters to businesses in the community requesting work opportunities. Two managers at Parker Hannifin responded.

Nearly 35 years later, Columbus participants are still providing a much-needed business service for Parker (which is now Parker Hannifin Seal Group's Engineered Polymer Systems [EPS] Division). Parker was honored by Columbus as "Outstanding Business Partner of the Year" in 2006.

One of Columbus' strategic long-term goals over the next three years is to actively market its business services and develop ongoing contracts with other local businesses.

Columbus operates according to the "social enterprise" business model, which allows us to work with business partners to integrate business principles and community mission. We provide customized business products and services to business partners. This in turn allows us to train, employ, and support people with disabilities so they can enjoy the self-esteem that comes from a job well done.

As part of Columbus' long-term strategic goals, FY 2005-06 was a year where a major effort was made to build awareness in the community about our social enterprise mission. Columbus expanded its business services and created three distinct business units.



■ Columbus Production Services

Production Services offers business services that are tailored to meet customers' production needs. CPS specializes in assembly, customized packaging, labeling/re-labeling, shrink wrapping, display buildouts, and industrial sewing.



■ Columbus Community Employment

Through this business unit, Columbus trains and places individuals or supervised work teams in businesses in the community. Companies have access to individuals who have been trained in production, custodial services, food service, laundry, and warehouse operations.



■ Columbus Secure Shredding

Columbus offers secure document destruction services that ensure a company's confidential material is destroyed according to the strictest Federal regulations and industry requirements.

A MISSION OF HOPE

Jeff came to Columbus four years ago. He values his working relationships with the supervisors who teach him new skills. He is learning to be a team player, and he enjoys that.



"Hard stuff is becoming easier for me now."

Dignity

Dignity through Work

On October 3, 2006, Columbus held its inaugural “Dignity through Work” recognition event. Local businesses and individuals were recognized for the contributions they have made to support the independence of people with disabilities.

The event was hosted by the Community Foundation for the Disabled Board of Trustees, and it was an opportunity for the Board and Columbus to thank the many people who have supported people with disabilities through successful, innovative solutions.

Approximately 165 people attended the morning event that celebrated many success stories. Keynote speaker Dr. Patrick Byrne, chairman of the board and CEO of Overstock.com, shared his thoughts on social enterprise. Chris Roybal, Governor Huntsman’s senior economic advisor, spoke about the importance of supporting people with disabilities and their families in the community.

The following awards were presented to recognize outstanding contributions and accomplishments:

- Sue and Raymond Behle received the **Visionary Leadership Award** for their contributions in advancing workplace opportunities for people with disabilities.
- The Housing Authority of the County of Salt Lake received the **Social Enterprise Award** for its entrepreneurial efforts in providing housing and work opportunities for people with disabilities.
- **Outstanding Business Partner of the Year Award** was presented to Parker Hannifin Corporation recognizing their 35-year partnership with Columbus Community Center to provide employment opportunities for people with disabilities.
- **Columbus Outstanding Worker** was awarded to Joyce Johnson for her exemplary work at Columbus in the Columbus Secure Shredding business unit.

Dignity through Work

PRESENTING SPONSOR

GE

SUPPORTING SPONSORS

Dan Jones and Associates
Overstock.com

EVENT SUPPORTERS

One-to-One Mortgage
Realty Executives
GE Money Bank
Wells Fargo
Brighton Consulting
US Bank

COLUMBUS SERVICES: BY THE NUMBERS

Business Units

3

Business Partners

62

Skill Training Programs

5

People Served Through Community Employment Programs

289

Individuals Placed in Jobs in Local Businesses

47

Wages Earned

\$358,000

A MISSION OF HOPE

Joyce was nominated for “Columbus Outstanding Worker” by her supervisor, Greg Yates. He has cross-trained her on every task in the shred room. He depends on her versatile skills and work ethic.



“Joyce is at the top of her game and committed to developing her career.”

Greg Yates, Joyce's supervisor

Financial Summary

Financial Summary for FY 2005-06

**COLUMBUS:
A MISSION OF HOPE**

Individuals Served

444

Staff Members

125

Program Areas

3

Production Facilities

2

Activity Facilities

1

Residential Facilities

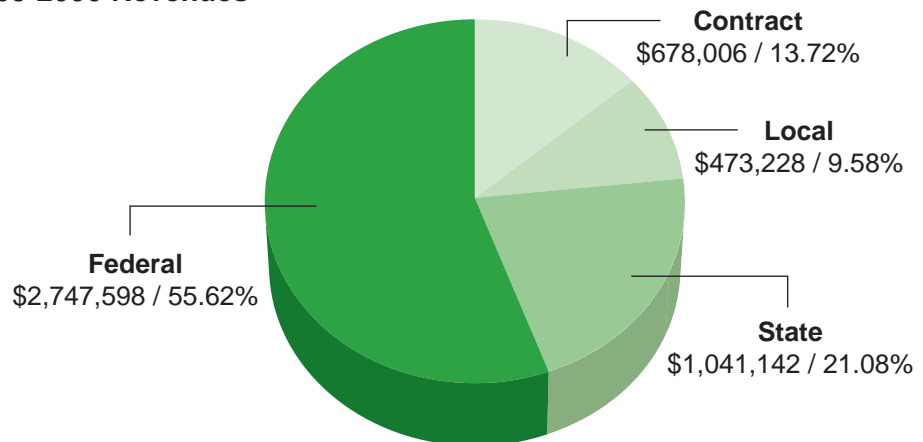
7

The Community Foundation for the Disabled and the Salt Lake City School District jointly operate Columbus Community Center. This contractual agreement allows Columbus to provide the Salt Lake City School District with educational and vocational services for students with disabilities from ages 16 to 22.

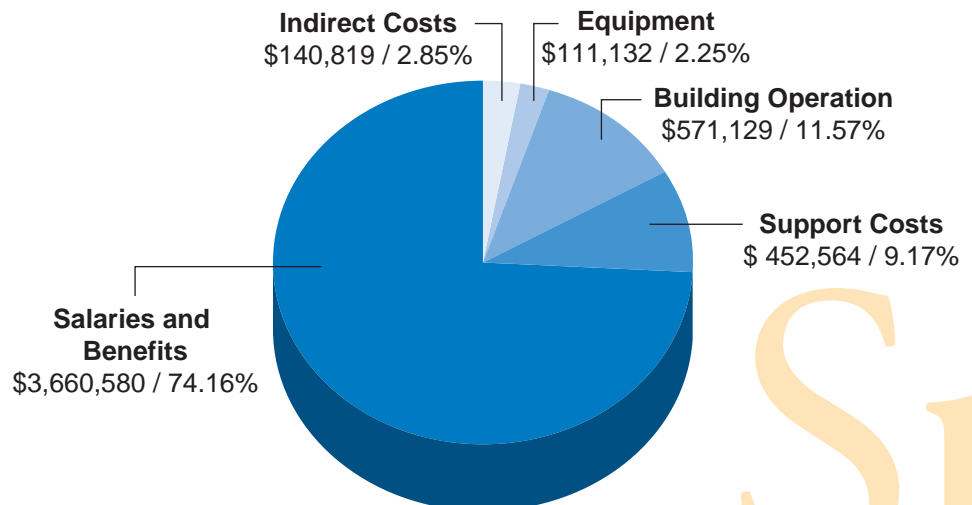
Financial and program information in this annual report is based on the 2005-06 fiscal year. The information is summarized from the following reports provided by the Community Foundation for the Disabled, the Salt Lake City School District, and Columbus Community Center:

- Columbus Community Center Statement of Program Revenues and Expenditures Fiscal Year ending June 30, 2006
- Annual Program Participant Descriptors and Outcome Measures Report July 1, 2005, through June 30, 2006
- Community Foundation for the Disabled, Inc. Financial Statement July 1, 2005, through June 30, 2006

2005-2006 Revenues



2005-2006 Expenditures



Su

Board Members and Key Personnel

Columbus Community Center Management Team

Dean Hoffman
Administrator

Kevin Keyes
Assistant Administrator

Fernando Godina
Accounting Director

Arden Lubeck
Director of Community Employment

Bradley Collings
Director of Business Operations

Stephanie Mackay
Director of Development

Jerry Farley
Director of Production Services

Chris Borton
Assistant Director of Quality Enhancement

Cheryl Deiner
Coordinator of Residential Services

Tracy Velasquez
Coordinator of Day Services

LuAnn Barney
Manager of Human Resources

Community Foundation for the Disabled Board of Trustees

Jon VanderStek
Board of Trustees President
U.S. Bank
Vice President, Private Client Group

Phil Johnson
Board of Trustees Vice President
Anchor Financial Services
Owner

Tom Barnes
Board of Trustees Past President
Brighton Consulting, LLC
Partner

Matt Wiese
Board of Trustees Treasurer
Clyde, Snow, Sessions & Swenson
Attorney at Law

Dr. Neil Kochenour
Board of Trustees Recorder
University of Utah Hospital
Retired Medical Director

Edye Blas
Roger Knight Construction
Marketing Manager

Jeremy Cunningham
Member-at-Large

Pattie DeNunzio
Integrated Title Services
Sales Representative

Renee McCarvel
Columbus Community Center representative

Dr. Douglas Nelson
Primary Children's Hospital,
Emergency Medicine
Representative for the Salt Lake City School
District Board of Education, Precinct 3

Myra Renwick
GE Capital Financial
Vice President, Compliance

Aaron Richardson
Realty Executives
Realtor

Stormy Simon
Overstock.com
Senior Vice President and Chief of Staff

Gwen Webb
American Express Centurion Bank
Director of Operations

Salt Lake City School District

Dr. McKell Withers
Superintendent

Shauna Carl
Associate Superintendent for Learning Services

Dorothy Cosgrove
Associate Superintendent for Support Services

Patrick Garcia
Executive Director of Human Resources

Janet Roberts
Business Administrator

Gary Smith
Chief Information Officer of
Information Services

Lesley McLaughlin
Executive Director of Academic Services

The Community Foundation for the Disabled is under contractual agreement for services with the Salt Lake City School District to provide educational opportunities for students with disabilities until the age of 22. We are grateful for the support of the Salt Lake City School District for financial and personnel management issues.



Columbus Community Center is jointly operated by the Salt Lake City School District and the Community Foundation for the Disabled, Inc.



Columbus residential and employment services are accredited by the Commission on Accreditation of Rehabilitation Facilities (CARF).
www.carf.org



Since 1968

Columbus Community Center
Community Foundation for the Disabled

3495 South West Temple
Salt Lake City, Utah 84115
(801) 262-1552

www.columbuscommunitycenter.org

**Annual Report funded
through a grant provided by**

**American Express
Foundation**



Copyright © 2007 Columbus Community Center.

*Graphic Design: Janice Campbell, The Very Idea®
Photography support: Emily Von Gunten, Creative Photography*